

Site Search

Belize Ecosystem Map: 2004 version

What's New!
Biodiversity and Environmental Resource Data System of Belize

Our spatial database. Look at geology, rainfall, roads, rivers, watersheds, elevation, communities and some spatial vegetation data

NEW RELEASE!

Belize Ecosystems Map version 2004.
 ArcView shapefiles
 2,904 kb (zipped)



SERVIR: Online interactive GIS maps from all Central American Countries

CCAD GIS database for Central America

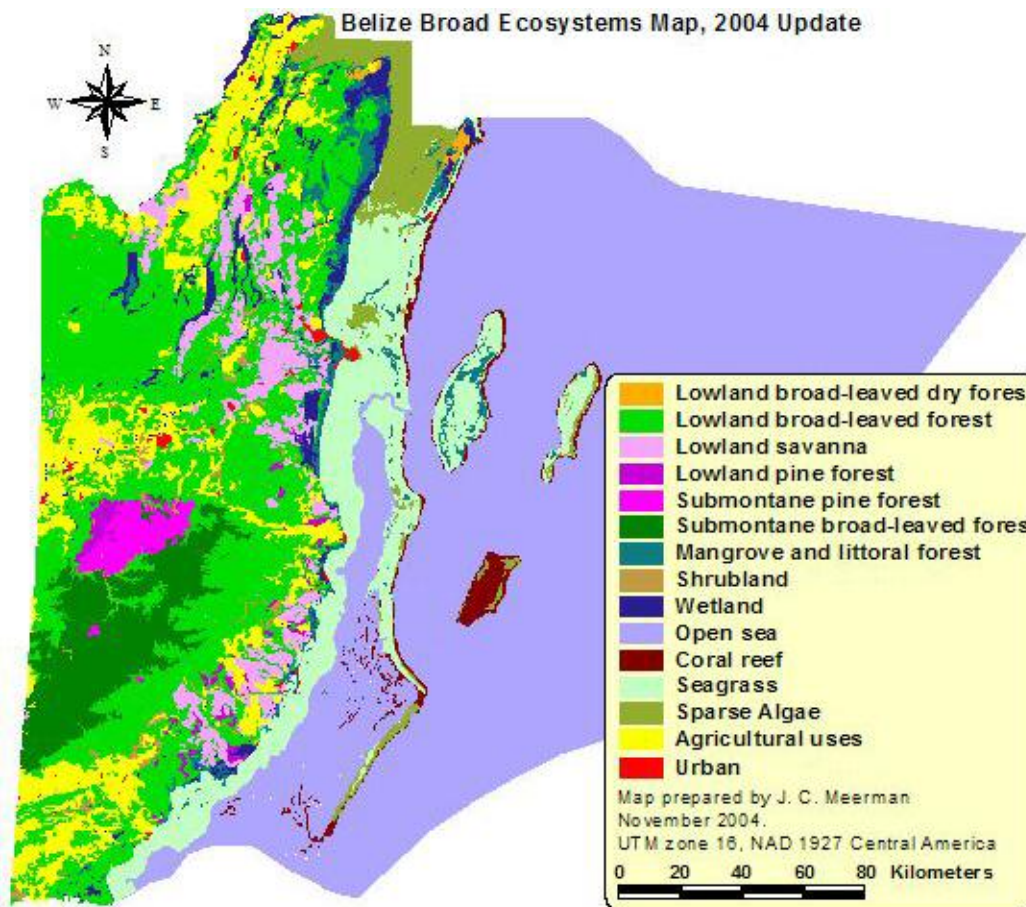
Belize Maps including topo maps etc.

Aquatic Ecosystems Map

Rapid Vegetation Survey of Turneffe Atoll

Powerpoint Presentation Given to the Mesoamerican Congress of Protected Areas in Managua, Nicaragua

The Meerman and Sabido (2001) Belize Ecosystems Map has now been updated and improved:



This latest product follows the Meerman & Sabido (2001) map, which was essentially an update of the 1995 Vegetation map of Belize by Iremonger and Browkaw. This Iremonger and Brokaw map borrowed heavily from the 1959 Natural Vegetation Map of Belize by Wright et al.

For the marine part, there existed a draft marine habitat map (Mumby & Harborne, 1999). The scale of the latter map was much finer than that of the Belize Ecosystems Map. Also, this map existed only in a draft stage and its accuracy is assumed to be no greater than 60%. To overcome the inconsistencies caused by the differences and reliability of both products, the various groups of habitats in the Marine map were clustered as to represent their main classifications and this result was re-digitized into polygons with a minimum size of 1 acre.

The resulting product was further updated and enriched using the following sources:

- Fieldwork data gathered by J. C. Meerman from 2001 through 2004. See <http://biological-diversity.info/projects.htm>
- Recent Landsat tm images: 1947_2004_02_28; 1948_2004_01_27 and 1949_2004_01_27

More Links

- Brokaw & Sabido, 1998. Vegetation of the Rio Bravo Conservation and Management Area.
- Murray et al, 1999. Soil-plant relationships and revised vegetation classification of Turneffe Atoll - Belize.,
- Penn et al, 2004. Vegetation of the Greater Maya Mountains, Belize.
- MET department: Climatological data
- Cornec, 2003. Geology map of Belize
- The Belize Territorial waters extend follows the Maritime Areas Act, (GOB, 2000)

The final product being an all encompassing Belize Ecosystems Map on a scale of 1:100,000 incorporating the main terrestrial and marine habitats (including deep sea habitats). In total 96 habitats were thus mapped:

- 65 Terrestrial classes
- 14 Marine classes
- 7 Agriculture / silviculture / mariculture classes
- 6 Mangrove classes
- 3 Inland water classes
- 1 Urban class

The original ArcView shapefiles can be [downloaded as a zipped file \(2,904 kb\)](#). The shapefile comes with full metadata. Please read the use constraints section in these metadata before using the data. Also available for download from the **Biodiversity and Environmental Resource Data System of Belize**.

The 2001 report has not been updated as yet but is still valid except for the "new" ecosystems that were not included in the 2001 version. The report is published in (low resolution) pdf format as [Volume I](#) (464 kb) and [Volume II](#) (1,422 kb) and should be cited as:

Meerman, J. and W. Sabido. 2001. Central American Ecosystems: Belize. Programme for Belize, Belize City. 2 volumes 50 + 88 pp.

The original 2001 report on Belizean Ecosystems and vegetation types was produced as part of the Central American Ecosystems Map (Worldbank/CCAD) and recognized 86 different ecosystems for Belize. The report described each of the ecosystems including a list of plant species identified in these. Maps give information on altitude, broad ecosystems, detailed ecosystems and fire risk. The report is published in (low resolution) pdf format as [Volume I](#) (464 kb) and [Volume II](#) (1,422 kb). The Original [ArcView](#) files (zipped 1,048 kb) should now only be used when a comparison between the 2001 and 2004 maps is required.

This 2001 project was part of the much larger Central American Ecosystems Mapping Project.

In this project all of Central America's ecosystems were mapped to a level of 1:250,000. A [graphic impression](#) of the draft product is available for viewing. A [wall poster](#) (in Spanish) has also been produced. Posters can be obtained at the [Programme for Belize](#) office in Belize City.

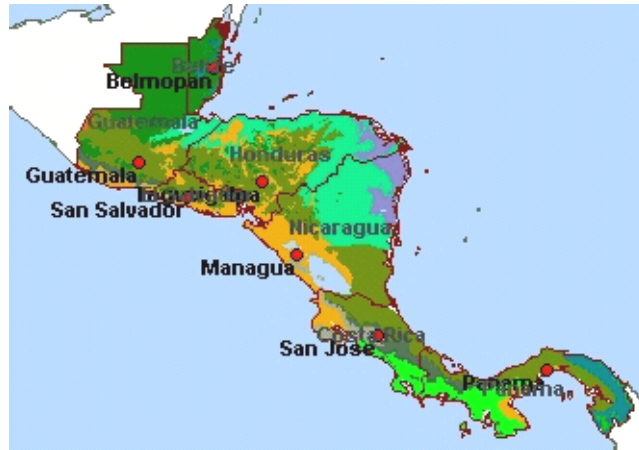
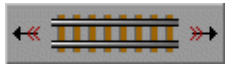


The final report on this project was finished in 2002 (Vreugdenhil, Daan, Jan Meerman, Alain Meyrat, Luis Diego Gómez, and Douglas J. Graham. 2002. Map of the Ecosystems of Central America: Final Report. World Bank, Washington, D.C.. And again can be [downloaded](#) in zipped pdf format (1,543 kb).

This and other files are also available for download from the [WorldBank Environmental Website](#). This includes "Ecosystems Map of Central America" maps: files of all 43 map sheets, which can be opened in PowerPoint. Arc-Info files, ecosystem descriptions (200+ pages), and final report can also be downloaded from the same site. A number of additional files can also be downloaded from the [WICE](#) website or from the [USGS](#) site.

To work with the Arc-Info, GIS (Global Information System) software is required. You

can download free ArcExplorer software by going to the ESRI webpage (click logo on the left). ArcExplorer is a lightweight GIS data viewer developed by ESRI. This freely available software offers an easy way to perform basic GIS functions.



SERVIR is the map-server for Meso-America. Through the internet, its purpose is to provide information to many users that will assist the protection of natural resources and biodiversity in Central America. From maps of ecosystems throughout the Central American region, the map-server can be used to provide information in formats understandable to key decision-makers, as well as the needs of project analysts and researchers.

[Back to top](#)

[About Belize](#) | [Administrative](#) | [Publications](#) | [Species Lists](#) | [Projects](#) | [Links](#) | [HOME](#)

Send mail to meerman@biological-diversity.info with questions or comments about this website.
 Copyright © 2002 - 2005 biological-diversity.info and [Belize Explorer Group](#) Design Concepts
 Last modified: August 23, 2005